

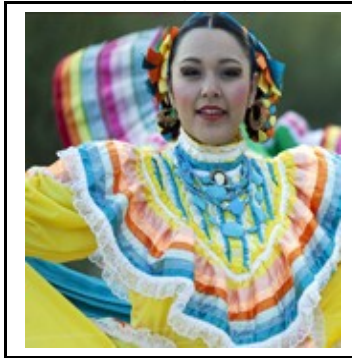
Freight Broker Workshop in El Paso, Texas

Information Package

Choose Your Own 2 ½ Days – Weekends OR Monday-Friday for One-On-One, Live Training
Bring your Spouse or a Partner FREE!

******* BRING YOUR LAPTOP – REQUIRED *******

El Paso, Texas



John D. Thomas, CPA, President

"Simply the Best Freight Broker Training" - Since 2003

Mailing Address

7101 N. Mesa St. #219 El Paso, TX 79912

Telephone Numbers

Toll free 888-526-ATEX (2839) / 915-613-1500 (Local)
915-526-5252 (Cell) / 915-875-1921 (Fax)

Federal ID No.

48-1297953

Authority

Former Freight Broker Authority – Atex Logistics, Inc. MC# 453560 B

Banking

International Bank of El Paso

Websites

Freight Broker Training: <http://www.atexfreightbrokertraining.com>

Broker Agent Training: <http://www.atexbrokeragenttraining.com>

Blog: <http://freightbrokeringblog.com>

Email Address

Info at atexfreightbrokertraining dot com

Better Business Bureau Certification

[BBB Accreditation](#) (915) 577-0191

Training Courses Offered

Comprehensive **Freight Broker Training** via telephone and Internet – unlimited support - \$1,697

Home Study – Same as above with limited support - \$897

Comprehensive **Broker Agent Training** via telephone and Internet – unlimited support - \$997

Live Freight Broker Workshop - \$2,650 (Spouse or Partner Free) in El Paso, TX. You choose your own 2 ½ Days with unlimited support after workshop training

Other Materials and Resources

Free eBooks: "Introduction to Freight Brokering" / "Working As A Broker Agent"

<http://www.atexfreightbrokertraining.com/inanutshell.shtml>

Freight Broker Workshop – Here Are the Details

El Paso, Texas

***** BRING YOUR LAPTOP – REQUIRED *****

Workshop Training Facilities

Wi-Fi is available throughout the training facilities

Want a \$180 Training Discount?

Stay at Embassy Suites (a Hilton Hotel) with the use of your suite for training and deduct \$180.00 – You net cost - \$2,470 plus free breakfast buffet is included in your room rate from about \$149/night

Other Possible Training Facilities

Camino Real, 101 S El Paso St (Downtown-Central El Paso)

Hilton Garden Inn, 111 E University Ave (Near Univ TX at El Paso)

El Paso and Nearby Mexico

Video: http://visitelpaso.com/visitors/to_do

Lodging – West Side

Red Roof Inn, LaQuinta (2 locations), Comfort Inn, Days Inn, Super 8, Econo Lodge Inn – Rates around \$49 and up.

Lodging – Downtown & Nearby

Doubletree, 113 W Missouri Ave., Embassy Suites Hotel, 6100 Gateway Blvd East (See above for \$180 discount)

Workshop participants will make their own travel and lodging arrangements and provide this information to Atex FBT 5 days prior to the first day of class.

Do NOT make travel arrangements until dates are first confirmed.

Class Schedule: 8 a.m. sharp Mountain Standard Time to 5 p.m for the first two days. Lunch is on ME the first day – 1 ¼ hours.

The third, one-half day session, 9 a.m. to 1 p.m., may meet elsewhere.

Workshop Registration

Registration and Deposit payments will take place up until 10 days prior to the first day of class. A deposit of \$1,500 is due 10 days prior to the first day of class. A full payment of \$2,650 may be made as well, if you desire. Full payment is due before leaving the workshop.

A Spouse or Partner may attend free with shared materials with the first person.

Payment Methods

There are 3 convenient methods for making payment:

- 1) Phone in your order to 915-613-1500 using your credit card,
- 2) Order by fax, 915-875-1921 with your credit card information,
- 3) Mail in your order with your check or money order

See the attached fax-in, mail-in, or call-in form:

<http://atexfrei.ipower.com/AtexFBWkshpOrderForm.pdf>

THE REGISTRATION & QUESTIONNAIRE MUST BE COMPLETED & FAXED-IN OR MAILED ALONG WITH THE DEPOSIT PAYMENT NO LATER THAN 10 DAYS BEFORE THE FIRST DAY OF CLASS.

Refund Policy – Read This Carefully

Clients have up until the 10 days prior to the first day of class to make the Deposit. A 100% refund may be issued (less \$100 processing fee) up until 10 days prior to the first day of class. A refund of 80% may be issued (less \$100 processing fee) up until the 5 days prior to the first day of class. No refunds will be issued during the 5 days prior to the first day of class except for participant's death, physical debilitation or being called to military service. Documentation will be required in each of these situations.

How to Prepare for This Workshop

Bring Your Laptop - Required

Review all the materials that are sent to you prior to class.

Complete the Questionnaire and fax it back.

Read the Do's and Don'ts below.

Read as much of the website as possible.

Read as many of the blog posts as possible.

Bring a laptop computer with Wi-Fi capability. If you have a medical condition or need special attention, please advise upon registration.

Do's and Don'ts

Do complete the Questionnaire that will be emailed to you or downloaded and return it by fax. Do expect support after formal training. Do come relaxed and prepared to share your goals. Do expect your materials to be in such detail to enable you to be in a "listening" mode during class.

Don't expect to absorb all the information all at once. Don't leave your cell phone on. Don't bring any type of taping or recording device. Don't be checking email on your laptop while training is in session.

What to Expect

Notepads and pens will be provided. Wi-Fi or cable hook-up will be available in class. Although some security will be provided during training and breaks, neither Atex Freight Broker Training, Inc. nor the hotel assumes any liability for loss or damage. You will be able to access your training manual plus the other materials from your computer. No printed copies will be available.

Policy

No abusive or offensive behavior toward the instructor and/or other participants will be tolerated. Sessions will begin promptly as announced and no effort will be made to refresh the information for those who are tardy.

No smoking in class or building except for designated areas. Beverage and/or light snacks ARE permitted in the training room.

Participants' success in starting and maintaining their own freight brokerage is dependent upon a number of factors both personal to each individual as well as current industry constraints. Therefore, no claim is made as to how much money or success each participant can expect.

Each participant will be responsible for his or her own success and will hold Atex Freight Broker Training, Inc. and its instructors and associates harmless in the event there is no success. Each participant is encouraged to engage his or her own legal, accounting or financial counsel prior to taking action for starting his or her own business.

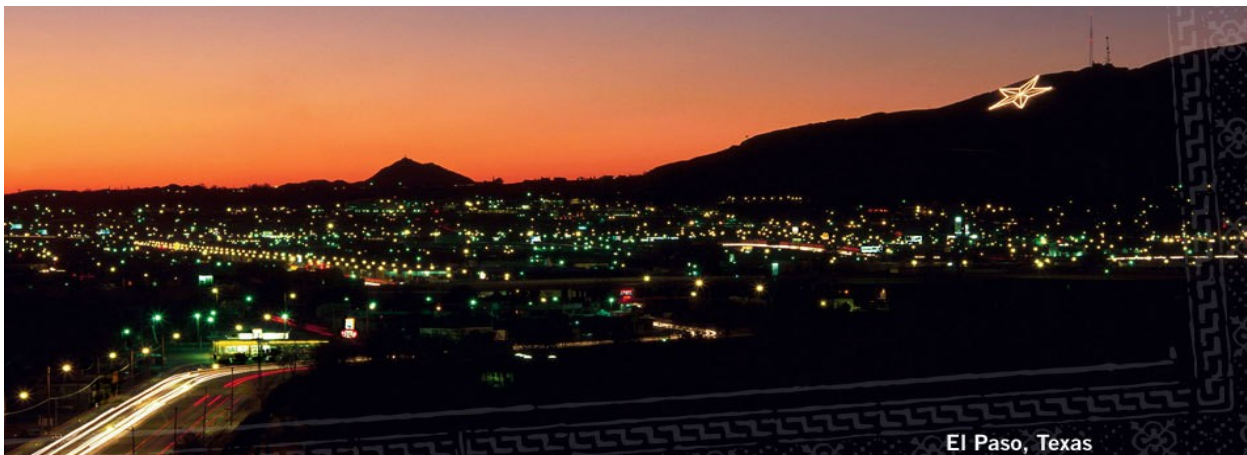
Some Facts on El Paso

Situated on the Rio Grande River directly across to its sister city in Mexico – Juarez
Population of El Paso County – approx. 740,000
The sun shines more than 305 days out of the year
Most airline connections to El Paso will route you through either Phoenix or Dallas

Go to Sign Up Form – Click Below

Copy & Paste This Link If You Need To:

<http://atexfrei.ipower.com/AtexFBWkshpOrderForm.pdf>



El Paso, Texas